

8 MOST WANTED INSECTS

APHIDS—Aphids can be found on a wide variety of plants, both indoors and out. Color will vary from white to red to green or black. They can be easily treated with any number of insecticides, including Triple Action +, Isotox, insectidal soap, malathion, & neem oil. Be sure to apply according to



instructions. Many plants may require more than one spray to get the problem under control.

BAGWORMS—Bagworms will hatch into caterpillars that will emerge and eat every needed evergreen they can find. They do major damage to junipers, cypress, and arborvitae. They can be controlled by handpicking the bags, or spraying Bt between mid May and the end of June, or by spraying Sevin at about the same time. See our sheet “Tent Caterpillars & Bagworms” for more information.



JAPANESE BEETLES—Japanese beetles appear in the summer, usually in June. Some years, the infestation is worse than others. Beetles hatch from grubs that are in the ground. If you get rid of the grubs, you get rid of the



beetles. (read our sheet on Japanese Beetles for more information) You can use Sevin, or K+Neem, or beetle traps to get rid of the pests. Traps are the most effective method, and least toxic.

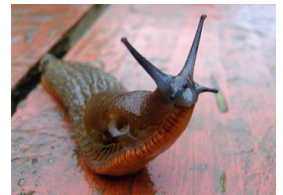
MEALYBUG—Mealybugs are soft-bodied relatives of scale. Plants infested with them look like they're covered in cottonballs. They suck the sap out of the plant, causing leaf distortion, discoloration, stunting, and even death. They are difficult to control because of the waxy coating on their shells. The most effective control is a horticultural oil spray.



SCALE—There are several different types of scale, the 3 most common being armored scale, soft scale and wax scale. They are small insects that latch onto plants and suck the juice out of them. They often look like small turtle shells or cottonballs. The most effective control is a horticultural oil spray. Check the label to make sure your plant can be sprayed with the oil, as some plants are sensitive.



SLUGS—Slugs are just like snails, only without the shells. They leave a very noticeable mucus trail in their path. They feed on living & decaying plant material, and are capable of “climbing” to get to a plant they want. They tend to leave irregular holes in leaves and blooms. Slugs are very easy to get rid off—use any of the slug pellets available on the market, or set out a saucer of beer in areas where you know they hide. They are drawn to the yeast & drown in the beer.



SPIDER MITE—Spider mites infest many different plants, sucking the sap and cell contents from the leaves. The damage shows up in pale colored leaves and webbing over the leaves that resembles normal spider webs. Triple Action +, K+ Neem, malathion and horticultural oil are all effective against spider mites. Most chemicals need to be applied at least 3 times, 7 to 10 days apart for good control.



TENT CATERPILLARS—They are easily identified by their white silk nests seen in trees. Most damage is done in early-mid spring as they emerge from the nest. There are 3 ways to control them—1. destroy the egg masses & nest 2. use Bt or Spinosad while the larvae are small (organic) 3. use Sevin while the larvae are small. (chemical) Bt, Spinosad & Sevin all need to be sprayed on the foliage to be an effective control.

